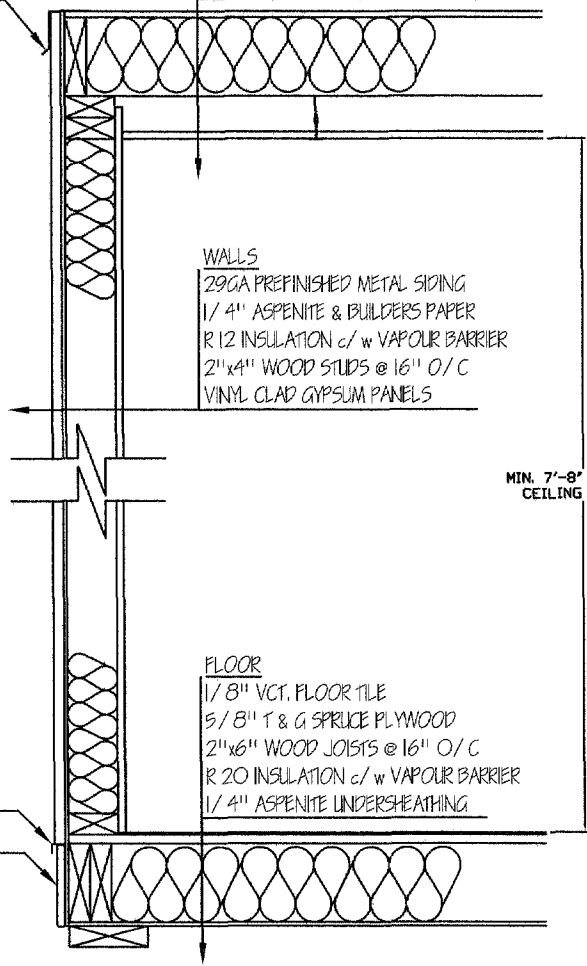


| REVISIONS | | | |
|-----------|-------------|------|----------|
| REV | DESCRIPTION | Date | APPROVED |
| | | | |

ROOF
 SINGLE PLY EPDM ROOFING MEMBRANE
 7/16" ASPENITE
 R 20 INSULATION c/w VAPOUR BARRIER
 2" x 6" WOOD RAFTERS @ 16" O/C
 SUSPENDED CEILING

PRE-PAINTED STEEL
 TOP FASCIA DRIP



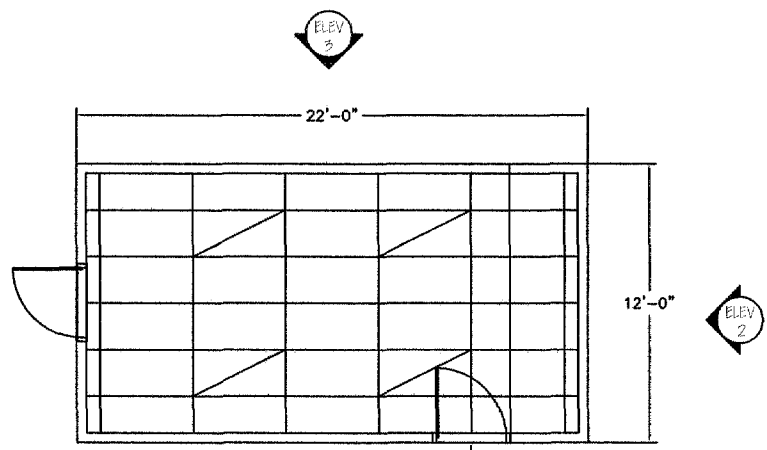
WALLS
 29GA PREFINISHED METAL SIDING
 1/4" ASPENITE & BUILDERS PAPER
 R 12 INSULATION c/w VAPOUR BARRIER
 2" x 4" WOOD STUDS @ 16" O/C
 VINYL CLAD GYPSUM PANELS

FLOOR
 1/8" VCT, FLOOR TILE
 5/8" T & G SPRUCE PLYWOOD
 2" x 6" WOOD JOISTS @ 16" O/C
 R 20 INSULATION c/w VAPOUR BARRIER
 1/4" ASPENITE UNDERSHEATHING

MIN. 7'-8" INTERIOR
 CEILING HEIGHT

METAL STARTER
 PAINTED WOOD BAND


SECTION I
 SCALE: 1"=1'-0"



FLOOR PLAN

3' x 7' HALF LITE H.M. DOOR c/w HINGES,
 SWEEPS, SEALS, LOCKSET, CLOSERS AND
 PANIC HARDWARE (TPY. OF 3)

| | | | |
|----------------------|-----------|-----------------|-------|
| CUSTOMER: | | | |
| STOCK UNIT 12' X 22' | | | |
| LOCATION: | | | |
| MISSISSAUGA, ON | | | |
| JOB NAME: | | | |
| WFE1222 | | | |
| DWG/JOB NO: | USED INV. | BY: | BY |
| QUOTE NO: | | YR | MO DY |
| SHEET NO: | | 09 | 01 01 |
| SCALE: | NTS | REV. NO: | 0 |



Provincial Partitions Ltd.